



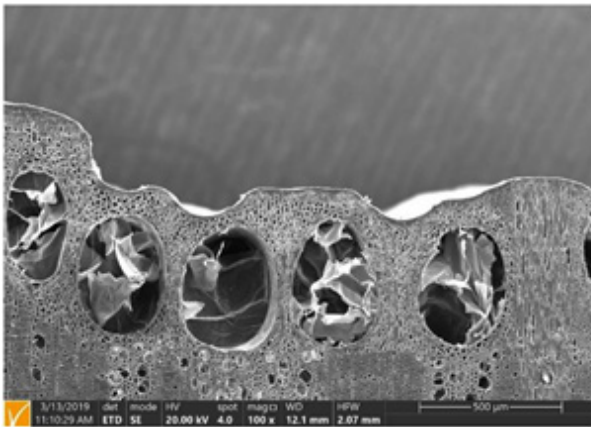
# SEDA

Purely oxidative drying oil based on  
renewable raw materials | depth impregnation | wax finish

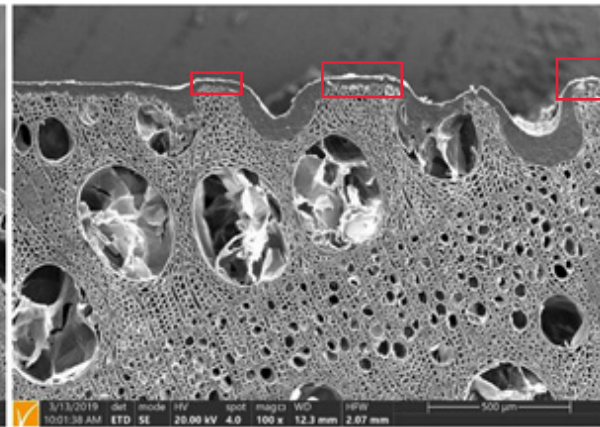


# SCHEUCHER®

Many aspects speak in favor of an oiled surface: It is a satin-matt, hard-wearing and breathable surface for a healthy living environment that has direct contact with the wood. Oxidative drying oils penetrate the wood, fill the pores and impregnate it. Whereas sealed surfaces have a thin protective film on and over the wood.

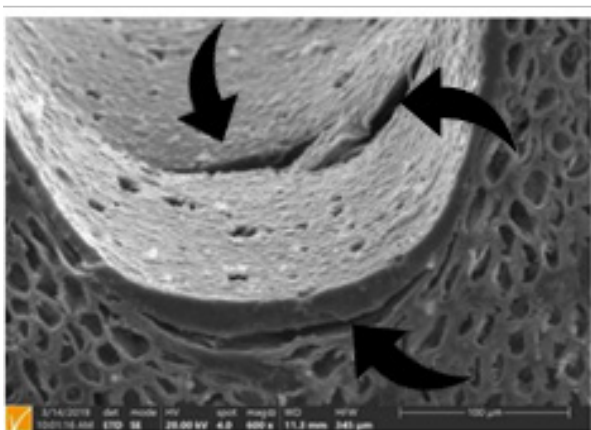


Scheucher SEDA-surface with depth impregnation



Film formation „like a UV oil“ with many weak spot areas

It is often overlooked that oiled parquet is not a short-term fashionable trend, but was there long before varnish treatments - that are common today - came into use. We have oiled our parquet floors on a separate production line from the very beginning and our oils are continuously optimized in terms of resistance and low maintenance in cooperation with our suppliers. We deliberately do not offer „UV-oiled“ or „2K-oiled“ surfaces. SEDA oiled parquet flooring guarantees an authentic surface that is optimally depth-impregnated, breathable, easy to clean, maintain and to repair partially.



On the left side you'll see a micrograph of a film-forming surface treatment, with the magnification below. The layer thickness of approx. 20-50 µm means that the wood cannot withstand normal shrinkage or swelling stresses under changing room climate conditions. This leads to cracks in the superficial layer, where common household chemicals such as dirty water, red wine etc. get into the underlying layer and penetrate the unprotected wood.

These effects do not occur at deep-impregnated surface treatments such as SEDA, because the surface protective film is so thin that the normal swelling and shrinking movements take place and the underlying wood is optimally protected by being saturated with the natural oil. The naturally oiled SEDA surface has other practical advantages that make it actually unbeatable for the use in the commercial sector (restaurants, boutiques, etc.): Smaller scratches are normal for parquet with heavy use and are gone in no time with a little bit of our care wax oil. Deeper ones can also be partially sanded and re-oiled.

This is not possible at varnished, UV „oiled“, „hybrid oiled“, „2K-oxi-oiled“ and other floors because the top, layer-forming surface gets damaged and small scratches are immediately visible. Scratches in lacquers and other layer-forming systems remain on your parquet until you eventually sand down your floor over its entire surface one day.

The maintenance required for SEDA oiled parquet is minimal. For private use, it is sufficient to wipe the floor with a damp cloth. Parquet floor soap or Scheucher Parquet CLEANER is added to the mop water. Finished - no polishing or anything like that is required. Parquet floor soap or Scheucher Parquet CLEANER cleans and cares for the oil contained in the wood and builds up a resistant patina. In the private sector, care oiling with care wax oil is recommended after approx. 50 wet cleaning cycles or at least every 2 years. When using our CAREBOY®, we recommend a refreshing with the solvent-free Scheucher Parquet CARE after about 15 wet cleaning cycles. Please refer to our care instructions for details.

## Comparison of SEDA oiled surfaces to UV (layer-forming) treated parquet floors

	In delivery condition		After intensive use	
	Scheucher SEDA	UV-cured	Scheucher SEDA	UV-cured
Palpable wood surface	☞ ☞ ☞	■ ■	☞ ☞ ☞	■ ■
Natural matt optics	☞ ☞ ☞	■ ■	☞ ☞ ☞	■ ■
Protection against pollution	☞ ☞	■ ■ ■	☞	
Protection from water/ household chemicals	☞ ☞	■ ■ ■	☞	
Breathable surface	☞ ☞ ☞	■ ■	☞ ☞ ☞	■ ■
Simple partial repair	☞ ☞ ☞		☞ ☞ ☞	
Easy cleaning	☞ ☞ ☞	■ ■ ■	☞ ☞	■ ■
Ease of care	☞ ☞	■ ■ ■	☞ ☞	■

### CHARACTERISTICS SEDA:

<b>SEDA</b>	Oxidative drying, deep impregnating oil with a wax finish
<b>Ingredients</b>	Based on natural raw materials, free from substances subject to labelling
<b>Manufacturing</b>	Seda oils and waxes are made in Germany
<b>Anti-allergenic</b>	No addition of allergenic substances
<b>Emissions</b>	Scheucher parquet treated with SEDA falls below the legal requirements of all common systems by far - even the current strictest emission requirements of the LEED system.
<b>Resistance</b>	Tested for chemical resistance Tested based on ÖNORM EN 13442 Table 1
<b>Saliva fastness</b>	Permissible without restrictions based on classification according to DIN EN 71-3
<b>Local Repairability</b>	SEDA surfaces can be easily repaired locally by hand
<b>Slip class</b>	R10

Klaus Bauer, 29.11.2021  
Head of Development at Scheucher Holzindustrie GmbH